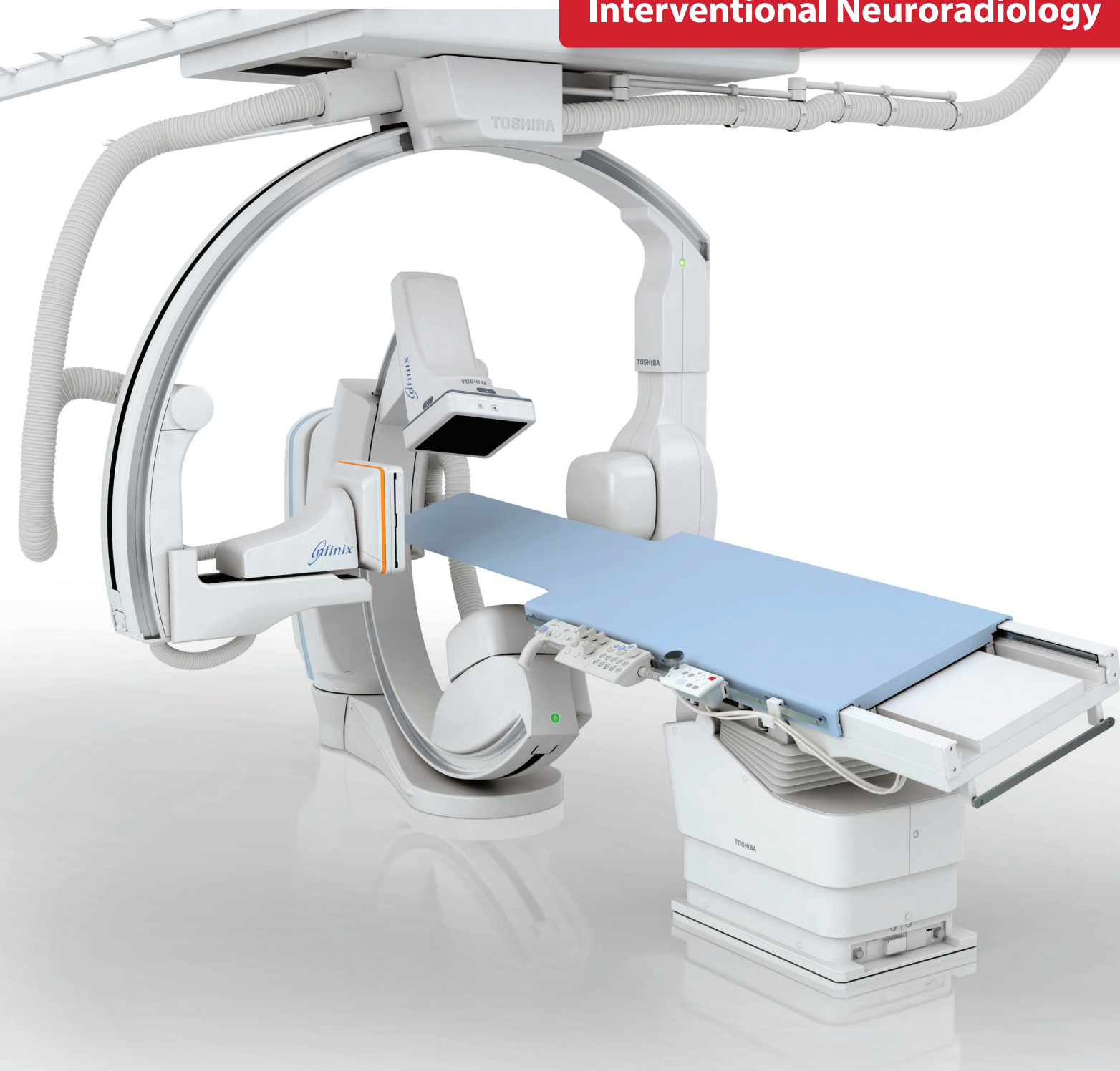


**TOSHIBA
MEDICAL**

Infinix™-i Biplane

Interventional Neuroradiology



“ I need more data in less time.”

The wait is over. The Infinix-i Biplane system features advanced C-arm technology that analyzes multiple views and angles, with the unique option of a C-arm flip to change the direction of the radiation source. With comprehensive dose management tools and suite of advanced imaging features, our industry-leading biplane systems enable clinicians to handle increasing demand without compromising on quality.

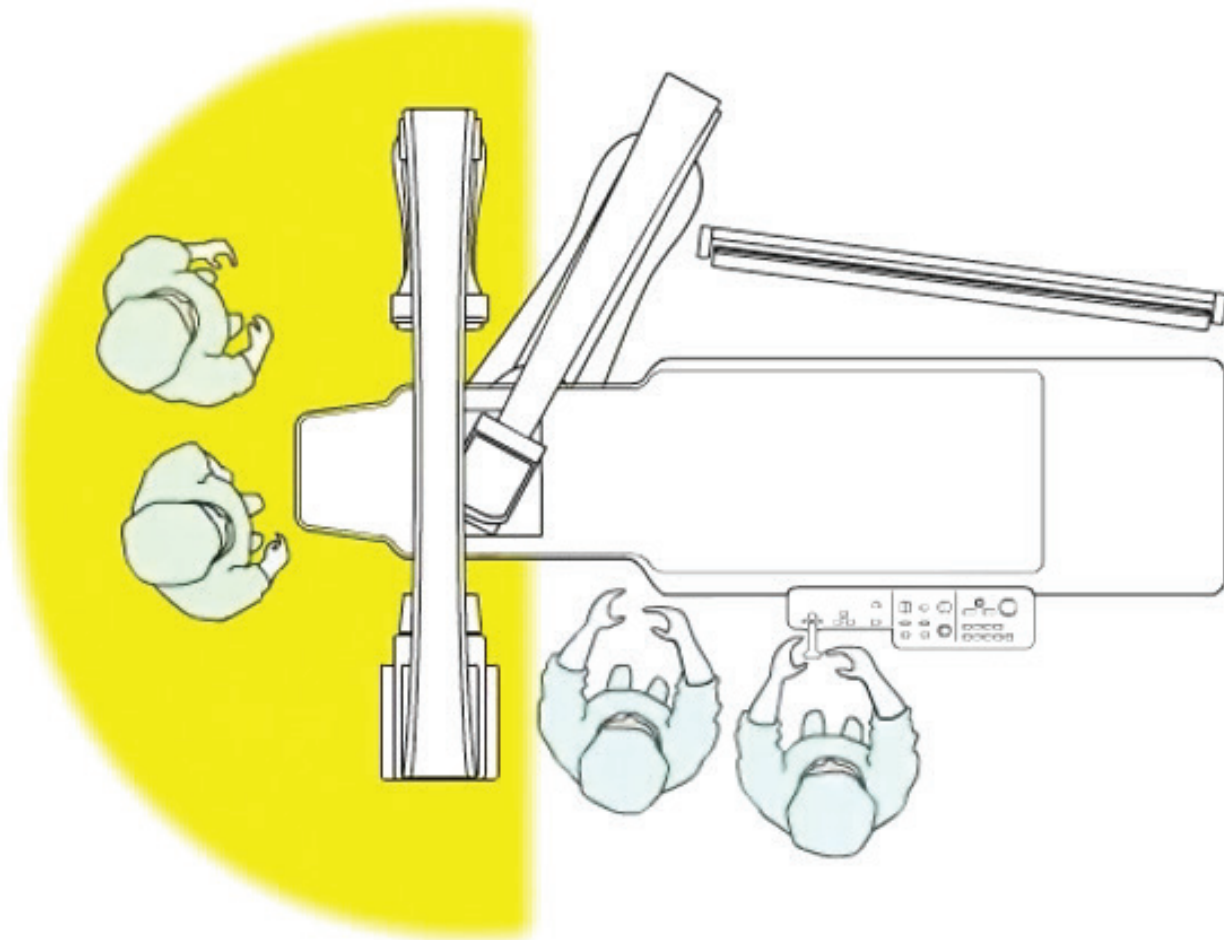


STREAMLINED WORKFLOW

Leading-edge **WorkRite** design delivers unprecedented access. Along with two C-arms that work simultaneously to deliver both an AP and lateral view, Infinix-i's groundbreaking features, including a C-arm flip and Variable Iso-center, can be found exclusively on Toshiba Medical's systems.

- **C-arm Flip.** Change the location of the radiation source from one side of the patient to the other.
- **Variable Iso-center.** Avoid raising table height or moving patient on the lateral.
- **Access Halo.** Ensure unobstructed head-end work space to improve patient access for staff and ancillary equipment.

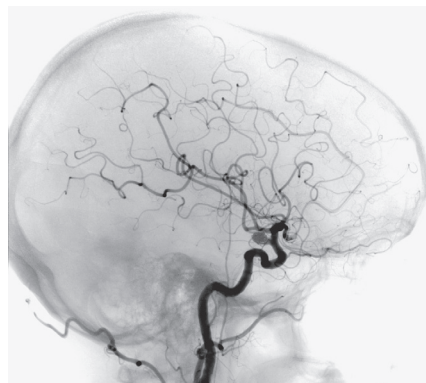
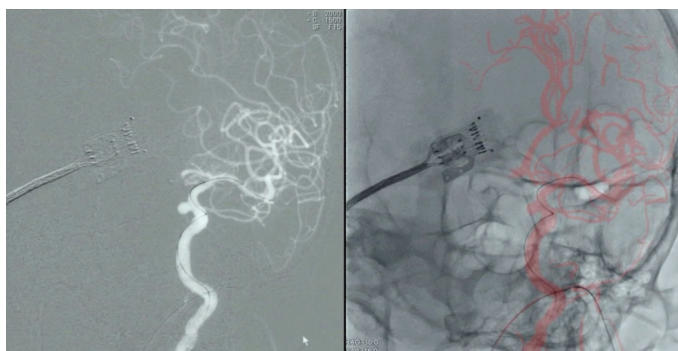
Move the C-arm, not the patient.



HIGH IMAGE QUALITY

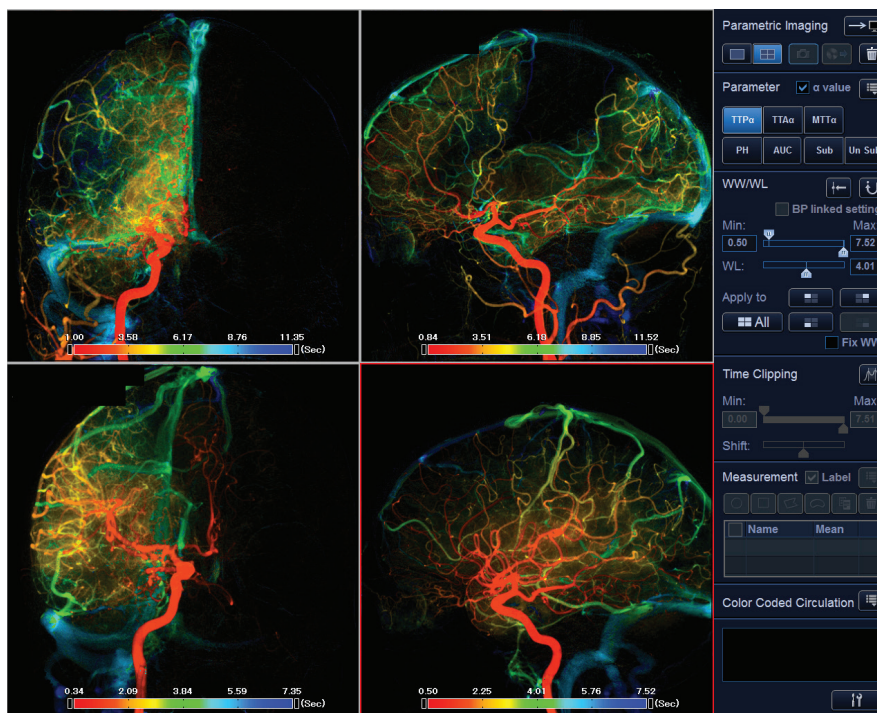
Leading-edge **ImagingRite** technology delivers high-quality images performed quickly. With 2D imaging standard on all systems, and the option of advanced features such as parametric imaging for a colorful visual representation of the brain, Infinix-i offers an exceptional suite of tools to assist clinicians in performing quick and safe procedures with confidence.

- **2D & 3D Roadmap.** Create a roadmap from an injection or previous acquisition to assist with guidance of catheters and devices during fluoroscopy.



- **3D Rotation.** Generate a 3D reconstruction with rotational DA imaging to show vascular structure.

- **Parametric Imaging (PI) with CCC.*** Display an entire image sequence as a single composite image that is color-coded to show the contrast media dynamics and allow easier visual evaluation.



*Parametric Imaging Software is not intended for stand-alone use or diagnosis.

All of the tools you need for high-quality images every time.

Optimum image quality at reduced dose.

COMPREHENSIVE DOSE MANAGEMENT TOOLS

Toshiba Medical's **DoseRite™** technology offers industry-leading dose management tools designed to assist clinicians in minimizing patient X-ray dose while maintaining image quality.

3D Advanced Image Processing

A combination of clinical dedicated algorithms and state-of-the-art hardware that provides optimized imaging protocols for any clinical application.

Spot Fluoroscopy

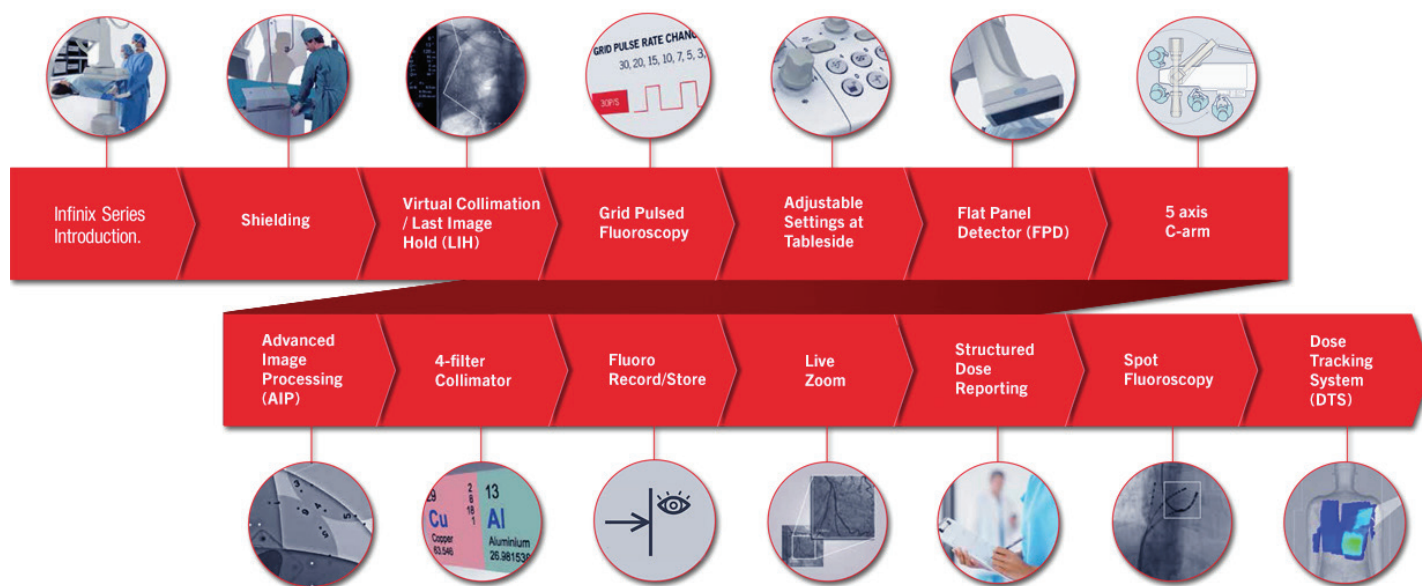
Allow for asymmetric collimation while expanding your view and display a live spot of fluoro anywhere in frame without losing your reference of LIH with this next-generation collimation.

Dose Tracking System (DTS)

Estimate dose delivered to the skin in real time and display it on a color-coded map during procedures so clinicians can continuously monitor exposure and make adjustments with Toshiba's award-winning and exclusive DTS technology.*

Live Zoom

Increase image display size in real time during both fluoroscopy and DA, offering potential dose savings compared to traditional field of view (FOV) magnifications.



*Awarded Best New Radiology Software 2014 by AuntMinnie.com

